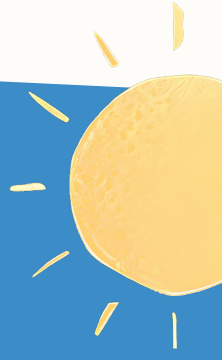


# Performance Report 2026



## 4 Housing Authorities serving St. Louis County



## Leadership in Action



### Our Mission:

Is to provide decent, safe, and affordable housing; ensure equal housing opportunity; promote self-sufficiency; and improve the quality of life and economic vitality of low- and moderate-income families.

## 3 vital programs

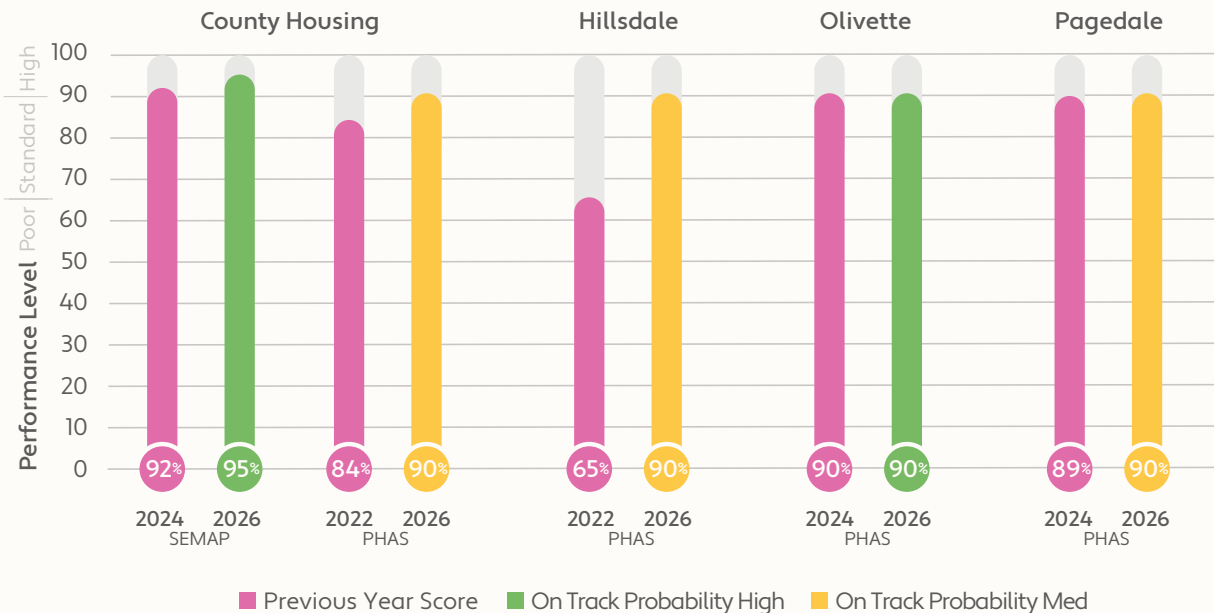
- HCV** Housing Choice Voucher Program
- PH** Public Housing
- LIHTC** Low-Income Housing Tax Credit



## PHAS & SEMAP Scores

### Why it matters

Each Housing Authority's PHAS and SEMAP scores communicate how well the agency is performing, impacts the amount of HUD funding it receives for the fiscal year, and determines the frequency of HUD public housing inspections.



# Building the Future



## Affordable Housing Program

*Peace Place Apartments will house 52 senior units, Arbor Hill Apartments includes 68 family units, and Rothwell Place will house 46 senior & family units*

County Housing continues to advance affordable housing initiatives with developments such as **Peace Place Apartments**, **Arbor Hill Apartments**, and **Rothwell Place**. These projects provide safe, modern, and affordable homes for families and individuals, addressing both current and future housing needs. Each development incorporates thoughtful design, community amenities, and sustainable practices, ensuring residents have access to quality living spaces that support their overall well-being. By investing in these projects, we are strengthening neighborhoods and expanding housing options for those who need them most.



## Landlords and Landlord Incentives

*2,130: Total number of landlords  
\$100,000 allocated to the newly launched Landlord Incentives Program*

Strong partnerships with landlords are critical to expanding housing opportunities for our participants. County Housing offers a variety of landlord incentives, including prompt and reliable payments, responsive support, and program guidance. These incentives encourage participation in our housing programs, help maintain high-quality rental units, and foster positive relationships between landlords and residents. Our ongoing engagement ensures landlords are recognized and supported as key partners in creating stable housing solutions.



## Access to Opportunity

*9 total partners*

County Housing remains committed to connecting residents with opportunities that support long-term success. Through targeted programs, partnerships with local organizations, and initiatives focused on education, workforce development, and financial literacy, we are helping residents achieve stability and upward mobility. By improving access to resources and support services, we are empowering families to thrive in their communities.



## Community Partnerships



Kathy J. Weinman  
Shelter



St. Louis County  
Job Center



## Resident Engagement



Over the reporting period, we continued to prioritize meaningful engagement with residents across our communities. Initiatives included regular community meetings, surveys, and events designed to encourage participation and feedback.